

# HRS-WFP-PS WORLD FEED PANEL QUICK GUIDE

## INSTALLING THE WORLD FEED PANEL (WFP)

Since the World Feed Panel's purpose is to provide an easy method to temporarily connect portable audio equipment to the installed studio equipment, the WFP must be mounted in a convenient, easily accessible location. This is typically in a studio furniture cabinet wall, but it can also mount in a rack using the optional WFP rack mount (TRSJOB-9605) or in a countertop caddy using the optional WFP caddy (PRE85-5514).

WFP power is supplied by a 16 VAC wall-wart transformer, with six-foot cable, that plugs into a 2-pin keyed Molex connector.

A 12-pin Molex connector (pinout shown below) connects audio to/from the console or other studio audio I/O. All signals are balanced, +4 dBu nominal.

Allow a minimum of 3" open clearance behind the metal faceplate to allow for easy access to the circuit board's Molex power and audio connectors.

When mounting in a cabinet wall, a 6.5"w x 4.5"h cutout is required. Radius the corners to prevent laminate cracks.

When the panel cutout is include on custom furniture, inside mounting is typically used since the cutout is covered in black PVC. But when a hole is cut in the field, the WFP is typically mounted from the outside in order to cover up a "less than perfect" cutout.

Six 6-32 screws, 1/2" or 3/4" long (customer supplied) fasten the panel to the cabinet or caddy (using wood screws) or to the rack panel (machine screws, lock washers and nuts). When mounting the WFP on the outside of a cabinet, place the panel into the cutout, level it, then mark the six screw locations. Use an 1/8" bit to predrill through the laminate to prevent future laminate cracking caused by the screw threads.

Pins 1 - 6 of the Molex connector carry the balanced output of a console bus or other studio output to the panel. Pins 7 - 12 connect the incoming portable audio signal to a balanced line input on the console or other studio equipment.

The panel is grounded through the balanced audio shield wires. If the shields are not connected at the console end, the panel metal should be tied to the facility's technical ground.

The WFP has no user adjustments or maintenance requirements.

### 12-PIN MOLEX, SIGNAL SUMMARY

PIN	SIGNAL #	FRONT PANEL CONNECTION
1	LEFT OUT, SHIELD	XLR=PIN 1, TRS=S, RCA=S, MINI=S*
2	LEFT OUT, LO (-)	XLR=PIN 2, TRS=R
3	LEFT OUT, HI (+)	XLR=PIN 3, TRS=T, RCA=T, MINI=T
4	RIGHT OUT, SHIELD	XLR=PIN 1, TRS=S, RCA=S, MINI=S*
5	RIGHT OUT, LO (-)	XLR=PIN 2, TRS=R
6	RIGHT OUT, HI (+)	XLR=PIN 3, TRS=T, RCA=T, MINI=T
7	LEFT IN, SHIELD	XLR=PIN 1, TRS=S, RCA=S, MINI=S*
8	LEFT IN, LO (-)	XLR=PIN 2, TRS=R
9	LEFT IN, HI (+)	XLR=PIN 3, TRS=T, RCA=T, MINI=T
10	RIGHT IN, SHIELD	XLR=PIN 1, TRS=S, RCA=S, MINI=S*
11	RIGHT IN, LO (-)	XLR=PIN 2, TRS=R
12	RIGHT IN, HI (+)	XLR=PIN 3, TRS=T, RCA=T, MINI=T

\* OUT signals come from the console outputs. The IN signals go to the console inputs.

\* Unbalanced signal cable shields must connect at both ends.

## PRODUCT DESCRIPTION AND USE

The World Feed Panel (WFP) is a studio interconnect panel for temporarily connecting portable audio equipment (DJ coffin, video camera, band stage mixer, audio sampler, personal recorder, etc.) to studio-mounted audio equipment (typically a console input and a console bus output).



The panel accepts a stereo input on discrete XLR, TRS (1/4") or RCA jacks, or through a stereo mini-jack (3.5 mm). The panel outputs a stereo signal on discrete XLR, TRS and RCA jacks and a stereo mini-jack. Mic level outputs (-50 dBm) are also available on two XLRs. An output ground lift switch is also on the panel.

The panel converts unbalanced -10 dBV inputs (RCA or mini-jack) to the +4 dBm level that feeds the studio equipment inputs. The +4 dBm outputs from the studio equipment are resistively padded to create the -10 dBV and -50 dBm outputs.

Connect only one type of audio input at a time. Multiple audio outputs can be fed simultaneously. Use the Output Ground switch to minimize ground noise (hum) on the balanced outputs through connecting (ON) or disconnecting (LIFT) the shield wires.

### WFP Connection summary:

RCA jacks (I/O): discrete, unbalanced -10 dBV nominal

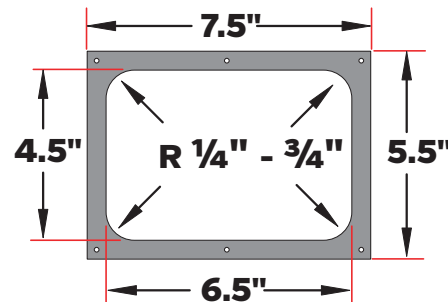
Mini-Jack (I/O): stereo, unbalanced -10 dBV nominal

TRS (I/O): balanced, +4 dBm nominal

XLR (I/O): balanced, +4 dBm nominal, plus a balanced -50 dBm (mic level) output

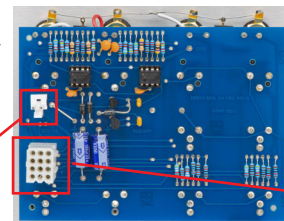
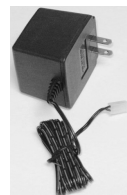
12-pin Molex: connects the studio equipment using discrete balanced +4 dBu inputs and outputs (see Signal Summary)

2-pin Molex: for the supplied 16 VAC transformer



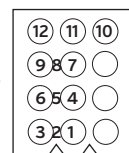
**WFP & CABINET CUTOUT DIMENSIONS**  
mounting holes:  
5" apart top-bottom,  
3.5" apart left-right  
R = Radius

**16 VAC POWER SUPPLY**  
(draws about 50 mA)



WFP CIRCUIT BOARD

**MOLEX HOUSING**  
(REAR, PIN INSERTION END, VIEW)



THIS DOCUMENT APPLIES TO  
HRS-WFP-PS

TITLE  
INSTRUCTION SHEET, ANALOG I/O WORLD  
FEED PANEL



PACIFIC RESEARCH &  
ENGINEERING

phone 1.252.638-7000  
pre.com | techsupport@wheatstone.com

DESIGNS BY PACIFIC RESEARCH & ENGINEERING

DRAWN

RM

SHEET

1 OF 1

DATE

Oct 29, 2015

APVD.

DWG. NO.

71-1999

REV.

B